

NEW MIMEsweeper for SMTP Edge Server

MIMEsweeper Edge Server Boundary Hygiene

Keeping the spam, viruses and other malware out of your network

The problem

Opening your network to the Internet carries numerous risks. The instant you accept email and file attachments, you're in for a world of pain:

The malicious – Viruses, Trojans, worms and all species of malware eager to infect, disrupt, annoy or paralyze.

The avaricious – Spam, adware, phishing attacks and the latest secretions of the seedy & greedy.

If the world stood still, it would be difficult enough to stop all of the above from entering your organization, crashing your systems, clogging your network, silting up your storage and horrifying your users. But the world doesn't stand still. The black hats never stop innovating. New services pop up with new threats in their wake. And users always find a way to pry open a new hole in your security.

The solution

The benefits of the Edge Server can be summed up in three words: peace of mind.

No longer do you need to expose your business critical infrastructure to all the detritus that is coming your way. Your servers will be more reliable; your networks faster; the disks less packed with unwanted information. With less flowing in to the main core of MIMEsweeper, email will arrive speedier; reporting will be more responsive; and the maintenance less burdensome.

The Edge Server will allow you to focus on getting the most business enablement from your MIMEsweeper investment, whilst leaving all the daily email noise for us to handle.

"Peace of mind" will come to mean, not just cleanliness but "more time", "more bandwidth", "more disk space", "more responsive", and "more secure".

MIMEsweeper SpamLogic™ anti-spam

SpamLogic uses a whole battery of defenses to deliver the best accuracy rates available (up to 99%). The defenses include Bayesian analysis, sender policy framework & sender ID, textual analysis, auto-whitelisting, tar pitting and real-time blacklisting, supported by real-time SURBL look ups and grey listing.

"Over 158 million data records of U.S. residents have been exposed due to security breaches since January 2005."

Privacyrights.org

The Highlights:

- MIMEsweeper SpamLogic Anti-spam
 - Up to 99% accuracy rate
 - TRUSTmanager state of the art reputation service
 - Image spam detection
 - Personal Message Manager lets users manage quarantines
 - Bayesian, heuristic and textual analysis
- Kaspersky Anti-Virus
- Site to Site encryption
 - Transport Layer Security (TLS)
- Widest Choice of Deployment
 - Available as software or VMware

TRUSTmanager™ - Reputation Service

TRUSTmanager is a reputation-based service that stops spam before it enters the gateway. It checks the reputation of all connecting SMTP hosts against a constantly updated database of reputation scores provided by Clearswift. The host is evaluated for previous spam-related activities and awarded a "reputation score" of sender trustworthiness. Now with four levels of reputation for more response options and defense levels.

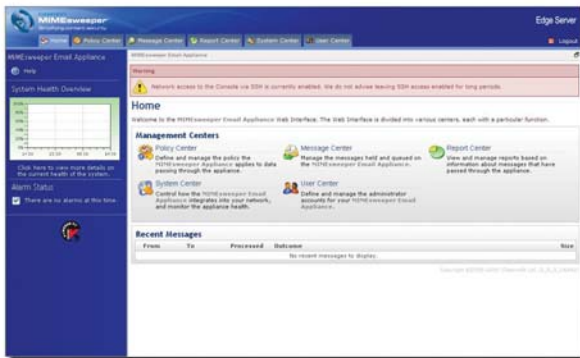
Good – bypass all anti-spam (whitelist)

Neutral – apply anti-spam filtering

Suspicious – block for re-try before spam filtering (greylist)

Bad – reject the message on sight*

TRUSTmanager management console now makes it easy to configure, monitor and manage all TRUSTmanager states – and block spam before it gets in.



Edge Server user interface

Greylisting

Temporarily blocks email messages from hosts you haven't heard from recently. If the sender responds, it means that it is legitimate (Spam Zombies and BotNets can't) and the message proceeds through anti-spam detection and full filtering. Our greylisting feature is tightly integrated with our TRUSTmanager reputation service in order to avoid legitimate emails from being delayed.

New Anti-Spam Engine

SpamLogic uses heuristic analysis to examine messages and analyze the results of the other anti-spam filters applied to these messages. This new capability is delivered to customers via pre-configured managed lists to stop image spam and other forms of spam.

Image Spam Detection

SpamLogic uses a rules-based approach to detect and stop image spam. Rules are based on numerous message attributes and provided via managed lists that are updated every 30 minutes.

Bayesian Analysis

A probability that the message is spam based on the words, phrases and attributes of the message. Our Bayesian algorithms are tuned for the probability profiles that best reflect spam determination and have been honed through experience with over 20 million users worldwide. They 'learn' the words that are used in your organization and adjust themselves accordingly.

Textual Analysis

We perform detailed analysis of all email traffic in order to understand the terms spammers use and the tricks they use to mask them (e.g. "V1agra") and provide them to you in the form of managed lists which are updated every 30 minutes.

Auto-whitelisting

SpamLogic's whitelisting function enables email administrators to control which hosts or domain are exempt from spam checking. This information is then fed back into the TRUSTmanager reputation service.

SURBL (Spam URL Realtime Blocklists)

SpamLogic's detects spam by searching e-mail message bodies for URLs which are known to be used by spammers. If a match is found, the message is considered to be spam.

Real-time Block Lists

By default, every inbound connection is checked against Zen.spamhaus.org., but you may also add specific RBL servers to the list. If one or more RBL servers recognize the IP address the email message is also considered to be spam.

'Tar Pitting'

When SpamLogic detects too many messages from the same host to non-existent addresses, it assumes a directory harvest attack is in progress and slows down all the mail from that host's address.

Sender Policy Framework & Sender ID

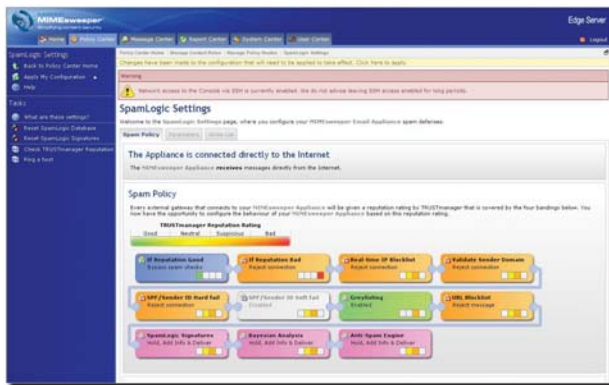
Two industry initiatives that put the burden of authenticity on the sender (spammers hate that). Senders of messages can add information to their DNS records that lists the IP addresses of their servers. The receiving host server can then check that the messages come from these hosts. It essentially helps determine whether a message sent really came from the host it was supposed to come from.

Sender Domain Validation

SpamLogic uses a simple check to see if a domain name exists for the senders' email addresses.

Personal Message Manager

SpamLogic takes the burden of quarantine administration from the shoulders of the IT staff. With Personal Message Manager, delete / release decisions are made quickly and easily by the people best equipped to make them: the user.



SpamLogic Settings

Directory Integration

MIMESweeper Email Appliance is designed to integrate with your organization's phone list and can reject any message addressed to people who do not exist in the directory. This is particularly helpful if your organization receives many thousands of messages for people who no longer work there. This 'phone list' may be held in Active Directory, Exchange or Domino systems.

SpamLogic Signatures

Previously seen spam often has identifiable traits that can be checked for. At Clearswift, we have a team of dedicated professionals that analyze spam in order to provide you with 'signatures' based on known spam. These 'signatures' are made available to you via automatic updates that occur every 5 minutes.

"SpamLogic yields far better and more adaptable results than any single approach – a modern rather than legacy approach."

Delphi

Anti-virus, anti-spyware and anti-phishing from Kaspersky

MIMESweeper software solutions let you use your own chosen anti-virus solutions, integrating them with anti-spam and content filtering into a single defense.

For our MIMESweeper Email Appliances, we've pre-integrated Kaspersky anti-virus because it's quite simply at the cutting edge of the anti-virus world.

Kaspersky pushes out more signatures than anyone and wins more awards, too. The Kaspersky Virus Lab disarms as many as 200 new threats per month and, after decades of anti-virus experience, has over 120,000 virus records in its database.

- Disinfects all types of malicious code, including viruses, Trojans, worms, Java applets, spyware, adware, phishing ActiveX and more.
- Filters incoming and outgoing email in real time.
- Automatic updates every 5 minutes, round the clock, with more frequent urgent updates during outbreaks.

Bottom line: there's no better anti-virus solution on the market and we include it with every MIMESweeper Email Appliance.

MIMESweeper TLS integration

The internet is not a private place and yet all of us trust are biggest secrets, our most detailed financial reports and our intellectual property to email every day.

The new Edge Server adds Transport Layer Security (TLS) to your MIMESweeper for SMTP deployment, ensuring that next time you share secrets, nobody is listening.

Delivering the Edge

MIMESweeper for SMTP Edge Server is an integral part of your MIMESweeper defenses. You can deploy this Clearswift Hardened Linux server either on VMware or natively on your own hardware.

NEW MIMEsweeper for SMTP Edge Server

The MIMEsweeper difference.

All MIMEsweeper solutions are built around our award-winning core technologies:

The MIMEsweeper Content Engine – a high-performance processing engine that uses recursive decomposition to break down every message into its constituent parts, analyze each part, compare it to the relevant policies and take action – all in real time.

The MIMEsweeper Policy Engine – the most granular policy management toolset available, allowing you to create and design rules, policies and thresholds for individual users, departments, locations – as well as by file type, file size, sender, time of day – any way you want to work. So you can let someone in the IT department receive executable files while barring everyone else. Responses are also granular, so you can decide exactly what action to take for each type of breach and/or any group or individual (Notify HR, quarantine, strip and send, combined actions, etc).

MIMEsweeper Management – a powerful, intuitive and easy to use AJAX management console that lets administrators and users do their jobs quickly, effectively and in an auditable fashion.

Common Management Console – Now MIMEsweeper administrators can manage email and web policies from the same management console, greatly simplifying management while ensuring consistent policy across all gateways. Control goes up, management, training and support costs go down.

Clearswift Integration – Effective content security involves a complex, layered defense. Clearswift are experts at integrating all of the parts of a security system into enterprise-class solutions that work smarter, faster and more transparently.

These core technologies add up to make Clearswift customers significantly more secure than with competitive solutions. That's why we're in business.

The bottom line.

Email is hazardous stuff. If you aren't effectively and efficiently filtering it before it enters your network, you're fighting a losing battle. MIMEsweeper makes it easy to win the battle against spam, malware and inappropriate content.

With powerful, manageable boundary hygiene, you're protecting your networks, storage, servers and desktops from attack, time wasting and inappropriate content.

* Only when configured

About Clearswift

Clearswift simplifies content security. Our products help organizations enforce best-practice email and web use, ensuring all traffic complies with internal policy and external regulations. Our range of content filtering solutions makes it easy to deploy, manage and maintain no-compromise email and web security for both inbound and outbound traffic.

Clearswift is the only vendor to offer comprehensive, policy-based content security in all three deployment methods: as software, as an appliance and as a managed service. All three platforms are designed to take the hassle out of securing internet traffic, with a clear, intuitive management interface; automatic, 'zero-touch' updates; powerful reporting and common-sense policy management.

Twenty years of experience across 17,000 organizations has helped us raise security standards while simplifying security management at the same time. We've helped many of the world's most successful organizations use the internet with confidence and are committed to staying ahead of the market and helping our customers defend against all emerging threats.

Contact Clearswift

United States

100 Marine Parkway, Suite 550
Redwood City, CA 94065
Tel: +1 800 982 6109 | Fax: +1 888-888-6884

United Kingdom

1310 Waterside, Arlington Business Park, Theale,
Reading, Berkshire, RG7 4SA
Tel: +44 (0) 11 8903 8903 | Fax: +44 (0) 11 8903 9000

Spain

Cerro de los Gamos 1, Edif. 1
28224 Pozuelo de Alarcón, Madrid
Tel: +34 91 7901219 / +34 91 7901220 | Fax: +34 91 7901112

Germany

Amsinckstrasse 67, 20097 Hamburg
Tel: +49 40 23 999 0 | Fax: +49 40 23 999 100

Australia

Ground Floor, 165 Walker Street, North Sydney,
New South Wales, 2060
Tel: +61 2 9424 1200 | Fax: +61 2 9424 1201

Japan

Hanai Bldg. 7F, 1-2-9, Shiba Kouen Minato-ku
Tokyo 105-0011
Tel: +81 (3) 5777 2248 | Fax: +81 (3) 5777 2249

Appliance

MIMEsweeper™ Email Appliance
MIMEsweeper™ Web Appliance
MIMEsweeper™ IM Enterprise Edition

Software

MIMEsweeper™ for SMTP
MIMEsweeper™ for Web
MIMEsweeper™ for Exchange
MIMEsweeper™ for Domino
Bastion™
DeepSecure™

Managed Service

MIMEsweeper™ Email Managed Service